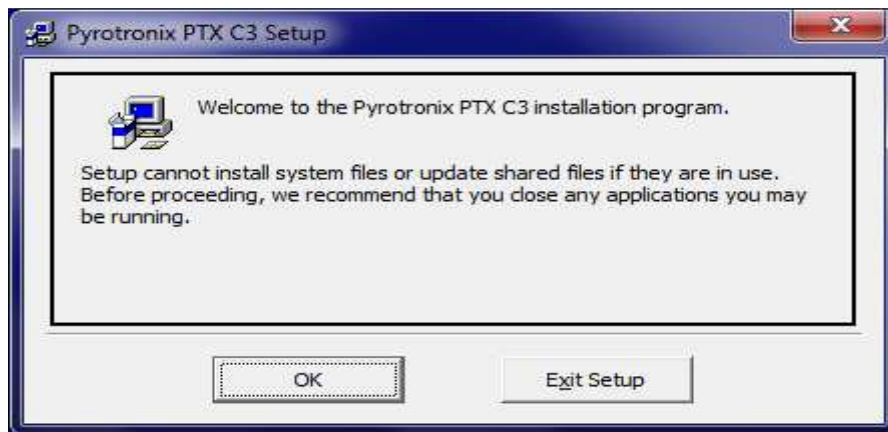
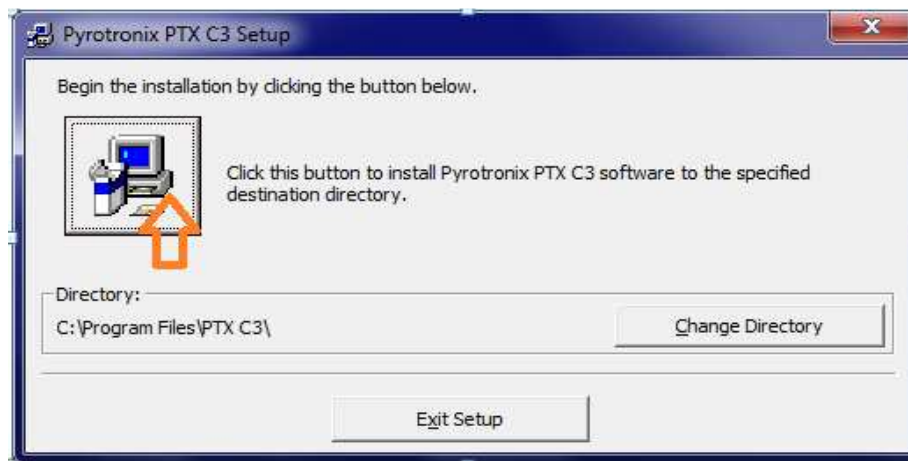


INSTALLATION DER SOFTWARE PTX C3



OK wählen



Auf das Computersymbol klicken.



CLICK CONTINUE



CONFIRM ALL WITH YES UNTIL SOFTWARE IS INSTALLED COMPLETELY.



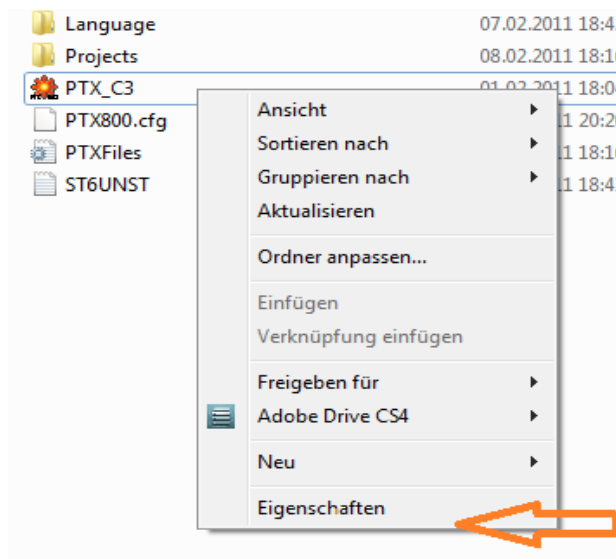


WINDOWS 7

For Windows 7 there are two specifications necessary – the pictures are in German language – but the settings are the same in english.

Click at the symbol of software ptx C3  with right mouse button.

Open **SETTINGS**.



Click the following settings under **COMPATIBILITY**

1. Windows XP - and confirm with V
2. Deactivation of... - confirm with V

